

Figure 1 – Looking south from valve at the intersection of E. Woodland Drive and Edgemere Road down Edgemere Road.



Figure 2 – Looking south at intersection of Woodland Drive and Edgemere Road down Edgemere Road.



Figure 3 – Looking south at valve near intersection of Chevy Chase Avenue and Edgemere Road down Edgemere Road.



Figure 4 – Looking south at valve near intersection of Deloach and Edgemere Road down Edgemere Road.



Figure 5 – Looking south at valve near intersection of Northwood Road and Edgemere Road down Edgemere Road.

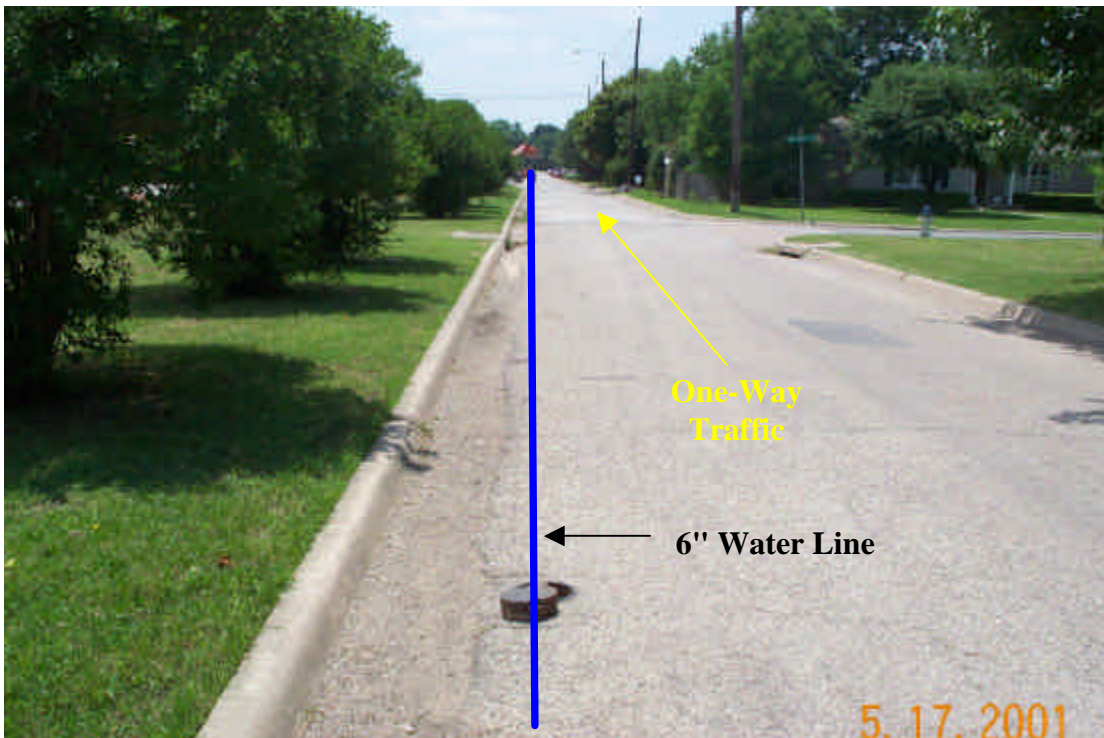


Figure 6 – Looking south at valve north of Del Norte Lane. Storm Drain inlets located at intersection of road.



Figure 7 – Looking south at unlocated valve location down Edgemere Road.

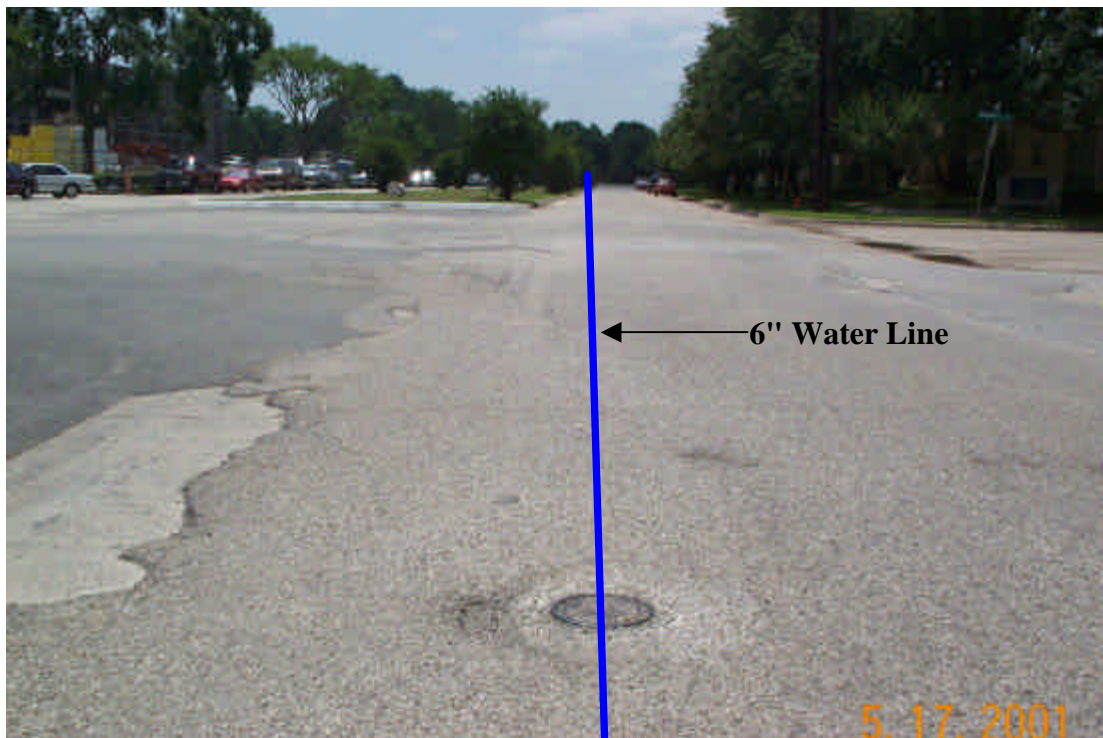


Figure 8 – Looking south at valve near intersection of Bandera Avenue and Edgemere Road down Edgemere Road.



Figure 9 – Looking south at new valves across from building construction site down Edgemere Road.



Figure 10 – Looking north from Northwest Highway down Edgemere Road.