

TOTAL SERVICES FOR

CMOM Compliance



30 YEARS OF PROVEN SOLUTIONS

Engineering

SSES

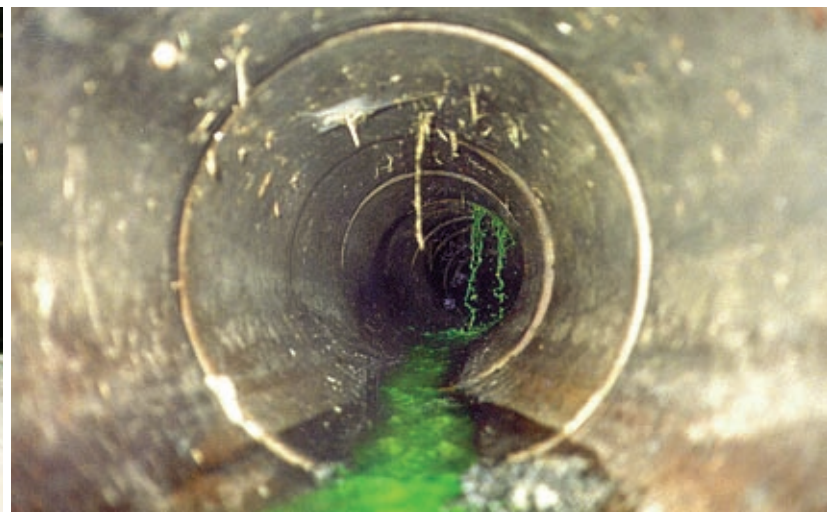
Modeling

Design

IMS

rjngroup

Excellence through Ownership



CMOM Impacts All Collection System Owners

The U.S. EPA signed a Notice of Proposed Rulemaking on January 4, 2001, which clarifies the prohibition of Sanitary Sewer Overflows (SSOs) and the NPDES permitting for collection systems. **C**apacity assurance, **M**anagement, **O**peration and **M**aintenance, (CMOM) includes provisions on satellite systems, record keeping, and reporting. The general standards require collection system owners to:

- Properly manage, operate and maintain all parts of the collection system
- Provide adequate capacity to convey base and peak flows
- Take feasible steps to stop and mitigate the impact of Sanitary Sewer Overflows (SSOs)
- Provide notification to parties with potential for exposure to an overflow
- Develop a written summary of the CMOM program and make it available to the public upon request



What Does CMOM Mean to You?

CMOM programs are developed, managed, maintained, and administered by collection system owners. SSES and hydraulic analysis will be required to determine the cause of capacity deficiencies. Owners must identify the administrative duties, personnel, equipment, design approaches, inspection and testing criteria, rehabilitation methods, construction standards, maintenance activities, operational needs and lines of communication. In the event of an overflow, owners will be required to:

- Implement a documented overflow response plan
- Notify the public that could be affected
- Make available a summary of their CMOM program, related audit activities and results to interested parties

RJN Group Provides Total Services to Fulfill CMOM Requirements

The written CMOM Program must include nine components:

- Goals
- Organizational Structure
- Legal Authority
- Measures and Activities
- Design and Performance Provisions
- Monitoring, Measurement and Program Modifications
- Overflow Emergency Response Plan
- System Evaluation and Capacity Assurance Plan
- CMOM Program Audit Provisions



RJN Group Provides Total Services to Fulfill CMOM Requirements

CONTINUED

RJN Group has the field personnel, resources, technical knowledge and engineering expertise to guide you through the CMOM process. Our comprehensive services include:

- Regulatory assistance with CMOM Plan development, administration, and auditing
- Sewer evaluation and field inspection services using proven I/I source identification techniques
- Hydraulic analysis through flow monitoring and hydraulic computer modeling to determine capacity deficiencies
- Engineering and rehabilitation design with consideration to product application, construction methods, quality assurance, and trenchless technologies
- Infrastructure management software (CASS WORKS®) to optimize O&M activities and to efficiently track and report CMOM program objectives and performance
- Assistance in identifying fiscal needs through state revolving loans and grants

RJN is Your **Total** Service CMOM Solution Provider

- 30 years collection system experience
- Over 750 collection system I/I reduction projects nationwide
- Total services—regulatory consulting, SSES field services, engineering design, information management technology
- ENR Top 25 firm in sanitary sewer work
- Documented results for I/I and elimination of SSOs



Excellence through Ownership

For contact information, please go to www.rjn.com or call 800.227.7838, x300