

RJN Designs Reconstruction of Rockwood Drive for Fort Worth

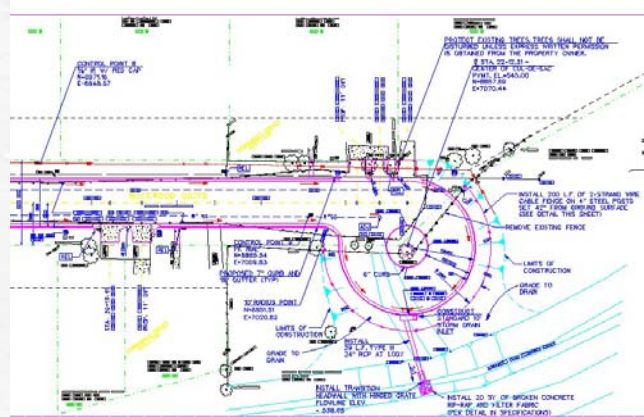
The City of Fort Worth Department of Engineering selected RJN to prepare plans, specifications, and estimates (PS&E) for the reconstruction of approximately one-half mile of Rockwood Drive from Churchill Road to the east dead-end. The project was part of the City's 1998 Capital Improvements Program.



The design included:

- Removal of the existing asphalt road and gravel shoulders
- Construction of a closed storm drainage system and asphalt pavement with concrete curb and gutter
- Removal and replacement of the existing sanitary sewer and water lines

The storm sewer system and curb and gutter were included to eliminate problems with water ponding in the residents' front yards.



The existing roadway dead-ends at the Tarrant Regional Water District (TRWD) flood levee system at the east end of the project without space for garbage trucks, fire trucks, or residents to turn around. To adhere to the City's criteria for dead-end streets, a cul-de-sac was added in this location. To

accomplish this and save the existing mature trees at this location, it was necessary to obtain right-of-way from TRWD, which required approval by the Army Corps of Engineers. The resulting cul-de-sac was designed around a mature pecan tree that the residents were adamant about saving.

The project entered the construction phase in late Spring of 2002.