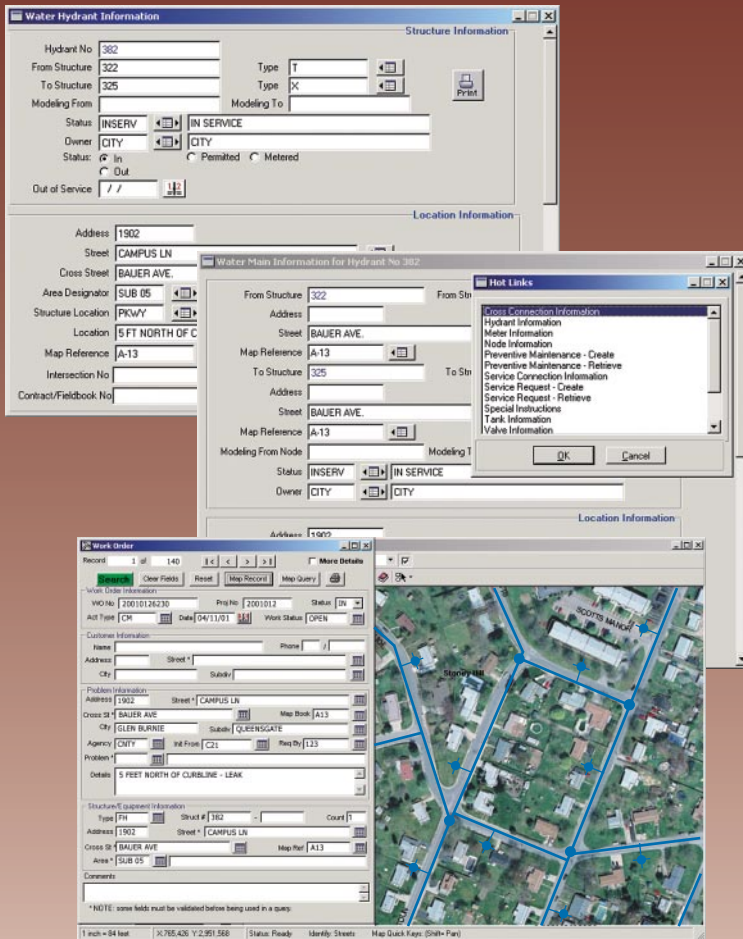


## PRODUCT FEATURES

# CASS WORKS®

## Version 8



WATER MAINTENANCE MANAGEMENT

## WATER MAINTENANCE MANAGEMENT

**MAINTAINS** a comprehensive network of water distribution structures including mains, hydrants, valves, meters, backflow connectors, tanks and wells.

**ALLOWS** both preventive and unscheduled maintenance activities to be scheduled and tracked.

**CROSS REFERENCE** capabilities allow quick access to critical shutdown information.

**ISSUES** work orders using any user-specified combination of date range, structure type, maintenance category and priority.

**RECORD** multiple maintenance activities on a single work order with job logout prompts and performance measurements.

**PROVIDES** a complete history of all maintenance activities with hot links to inspection records.

**ACCOUNTS** for maintenance costs including personnel, materials, equipment, and contractors.

**MAINTAINS** stockroom inventories of all parts, materials, and equipment.

**FACILITATES** both standard and ad hoc reporting. Print maintenance task summaries for given period (weekly, monthly, quarterly or annually).

**PROVIDES** dynamic linking of digital images (as-builts, schematics) to asset inventories, work orders, GIS and AM/FM.

**WEB ENABLES** information through enterprise reporting tools.

**MANAGES** information for Capital Asset Management and GASB 34 reporting.



An Employee-Owned Firm • 1.800.227.7838 • www.rjn.com

